

Instructions for assembly high brake new

Instructions for assembly of high brakes:

1. When you receive delivery of the high brake it will be assembled as shown in figure 1.
2. To assemble the brake on this chair you should slightly loosen the bolt (10) at the inside of the brake (figure 2) to enable the brake clamps (3 and 4) to fit around the seat tubing of the wheelchair.

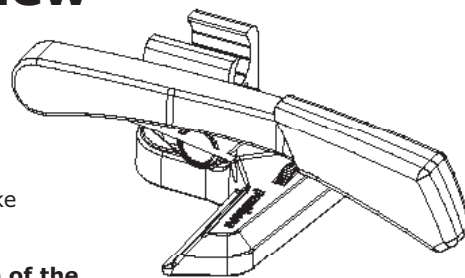


Figure 1

NB! The bolt for adjusting the brake is situated on the inside of the brake, not on the outside of the brake as on earlier Panthera brake models.

3. Then try tightening the bolt (10) and move the brake lever (1) forward to brake. The brake should be adjusted so that, when locked, it sinks into the tyre about 4-5mm.
- **If you think the braking is too slack**, fold back the brake lever and loosen the bolt (10), then move the brake back slightly. Tighten the bolt and check that you are satisfied with the brake tension.
- **If you think the braking is too tight**, loosen the bolt (10) and move the brake slightly forward. Tighten the bolt and check that you are satisfied with the brake tension.
4. Make sure that the locking surface (2) is straight where in contact with the rear wheel to ensure optimum braking.
5. Do the same on the other side.

NB! If the tyre pressure has fallen and you adjust the brake using the adjustment ring to make sure that the brake works, do not forget to remove the adjustment ring when you pump air into the tyre again so that the brake does not push into the tyre too much.

Assembling the brakes (see figure 2):

1. Move the adjustment ring (6) into the locking arm (2) and then attach the wire (5) in the adjustment ring (6).
2. Thread the wire plug (17) with the curved, smoothest surface outward, over the wire. Then press the wire plug securely into the hole in the locking arm and make sure the wire plug remains in place while you screw in the terminal screw (13). Make sure the track in the wire plug is securely in place on one side or the other, and not at the top or bottom of the hole.
3. Screw the bolt (11) through the bushing (7), the locking arm (2), the spring (9) and the washer (14) into the outer clamp (3). Use the Loctite 2701 on the hinge in the outer clamp (3). **NB!** Spray Loctite activator 7649 in the thread before using Loctite 2701.
4. Assemble the handle (1) onto the outer clamp (3) using the bushing (8). Use the Loctite 2701 on the hinge on the outer clamp (3). Place the sticker (18) over the hole for the socket head key.
NB! Spray Loctite activator 7649 in the thread before using Loctite 2701.
5. Attach the wire (5) into the handle (1) using the plug washer (16) and screw (12). Tighten the screw to its full extent but not too tightly since this will damage the tracking in the plastic.
6. Secure the inner clamp (4) into the outer clamp (3) using the washer (15) and bolt (10).
7. Finally, spray both washers with some kind of spray lubricant. Check that the wire is adjusted at the right length by first pulling out the wire to its full extent and then twisting the adjustment ring three turns so that the wire is the required length.

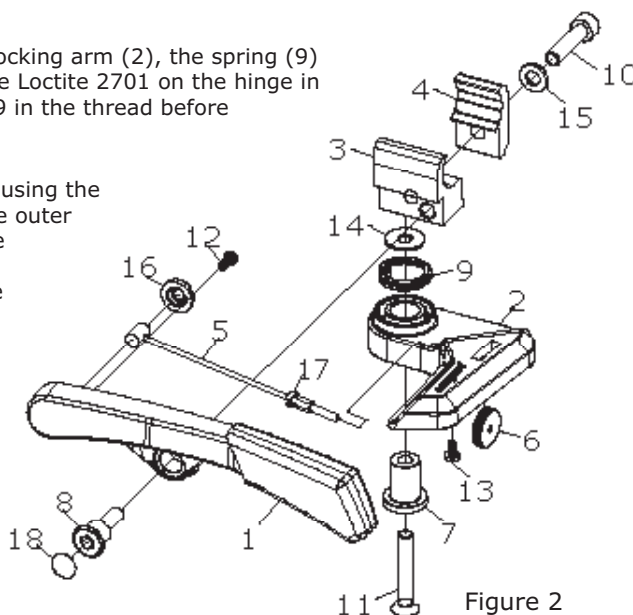


Figure 2